

# freiraum



25h

copenhagen / indre by  
twenty five hours hotel

# i can't adult today.

## overview

---

- 243 rooms
- kreakfunk bluetooth speakers
- free high-speed wi-fi throughout the hotel
- sauna
- function rooms
- 25hours things shop

## public areas

---

- 25hours things shop
- vinyl lounge
- NENI restaurant
- rendezvous bar
- Café Duse
- function rooms



# conference packages

## basic package

always included

- pad & pencil, projector and screen or flat screen (depending on the conference room)
- 1 whiteboard/pin board (covered on both sides)
- 1 flipchart with paper and pens
- 1 moderator's toolkit
- free high-speed Wi-Fi
- personal support during the conference

---

additional conference equipment  
available on request

## half-day package

- room rental
- standard set-up and equipment
- water & coffee during the day
- 1x coffee break morning OR afternoon
- 1x 2-course lunch OR dinner @NENI incl. 1 soft drink

---

700 dkk p.p.\*

## full-day package

- room rental
- standard set-up and equipment
- water & coffee during the day
- 1x coffee break morning
- 1x coffee break afternoon
- 1x 2-course lunch @NENI incl. 1 soft drink

---

950 dkk p.p.\*

\* minimum spend of the room needed

# room rent overview\*

## style

- \_ 74 m<sup>2</sup>
- \_ capacity of 36 people
- \_ set-up classroom style
- \_ incl. water and technic
- \_ set-up in islands

---

all day 6.000 dkk  
half day 4.000 dkk

## opinion

- \_ 60 m<sup>2</sup>
- \_ capacity of 16 people
- \_ set-up classroom style
- \_ incl. water and technic

---

all day 5.000 dkk  
half day 3.000 dkk

## f\*\*k everything

- \_ 52 m<sup>2</sup>
- \_ capacity of 16 people
- \_ set-up boardroom style
- \_ incl. water and technic

---

all day 7.000 dkk  
half day 5.000 dkk

## doubt

- \_ 32m<sup>2</sup>
- \_ capacity of 8 people
- \_ incl. water & technic
- \_ set-up boardroom style

---

hourly rate 600 dkk

## screening room

- \_ incl. water and technic
- \_ excl. f&b
- \_ furniture not included  
in rental price

---

all day 20.000 dkk

## archive

- \_ incl. water & tech
- \_ capacity of 8 people
- \_ set-up boardroom style

---

hourly rate 600 dkk

\*without conference package

# extras

## soft drink package

---

full day 60 dkk p.p.  
half day 40 dkk p.p.

## extra coffee break:

- \_ baked good
- \_ fruit basket
- \_ coffee & tea

---

85 dkk p.p.

## extra treats

- \_ sweet or salty

---

35 dkk p.p.

## extra pinboard or flipchart

---

150 dkk whole day

## cocktail masterclass

- \_ at rendezvous bar
- \_ max. 15 attendees
- \_ includes 3 drinks

---

350 dkk p.p.

## NENI breakfast

- \_ breakfast buffet
- \_ coffee and tea

---

235 dkk p.p.

## NENI lunch

- \_ chef's choice menu
- \_ incl. 1 soft drink per person

---

295 dkk p.p.

## NENI dinner

- \_ 3 course tasting menu
- \_ excl. drinks

---

545 dkk p.p.

## light breakfast

- \_ served in the meeting room
- \_ juice, coffee, tea, water, croissant, fruit, buns, jam and cheese and cold cuts

---

125 dkk p.p.

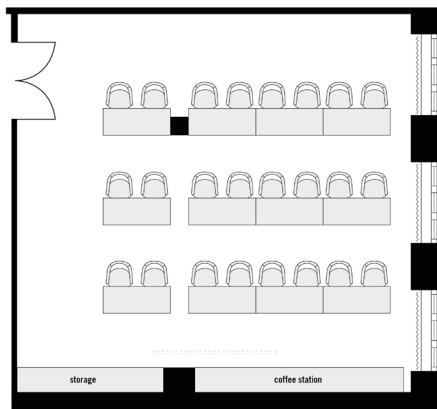
## private dining room

- \_ price for food & drinks will be deducted from the minimum spend

---

thursday-saturday  
15.000 dkk minimum spend  
sunday-wednesday  
10.000 dkk minimum spend

# style



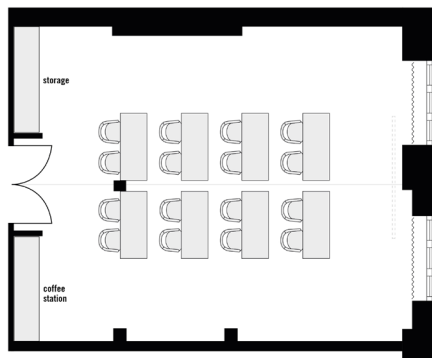
## overview

Inspired by the building's history, the Style meeting room is reminiscent of a classroom. The largest of the hotel's meeting rooms boasts plenty of natural light and its 74 sqm can accommodate up to 24 people with classroom-style seating. The colourful furnishings and conference technology – which is included as part of the package – offer the perfect setting for the most diverse meetings and events.

## facts

size	room capacity [max. capacity]	equipment	minimum number of attendees
– 74 m <sup>2</sup>	– classroom-style [24 people] – islands [36 people]	– set-up classroom style – incl. water and technic	– 15 people
room rental (equals minimum spend)	all day 6.000 dkk half day 4.000 dkk		

# opinion



## overview

The Opinion meeting room challenges the decision-making ability of meeting participants. Divided exactly into two colours, the room is ideal for creative meetings, workshops or product presentations. The room also features large windows, modern conference technology and a flexible layout.

## facts

size	room capacity [max. capacity]	equipment	minimum number of attendees
— 60 m <sup>2</sup>	— classroom-style [16 people] — islands [24 people]	— set-up classroom style — incl. water and technic	— 6 people

room rental  
(equals minimum spend)      all day 5.000 dkk  
half day 3.000 dkk

# f\*\*k everything

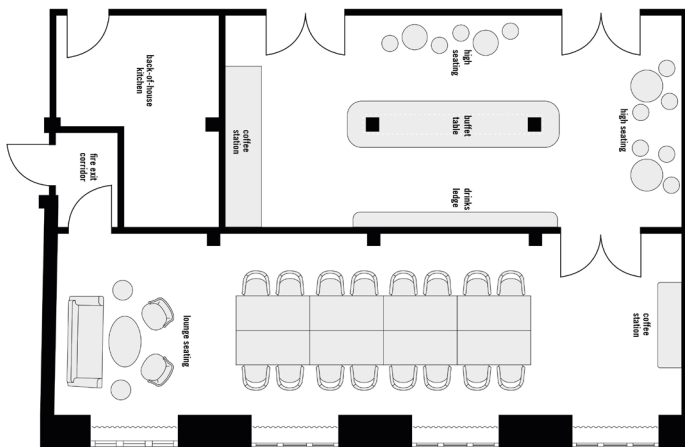


## overview

It isn't just the name that divides opinion; the furnishings are also not what you would expect from a regular conference room. The extravagant wallpaper, patterned carpet and colourful curtains create a cosy atmosphere, and the wooden table in the centre of the room promotes the creative exchange of ideas. A seating area with vintage furniture and access to our breakout area also provide the opportunity to gather in smaller groups.

## facts

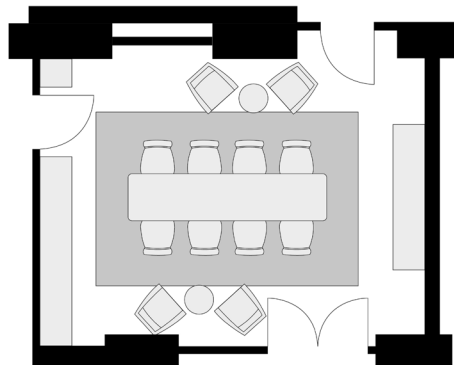
size	room capacity [max. capacity]	equipment	minimum number of attendees
_ 52 m <sup>2</sup>	_ boardroom [16 people]	_ set-up boardroom style _ incl. water and technic	_ 6 people



room rental  
(equals minimum spend)      all day 7.000 dkk  
half day 5.000 dkk



# doubt



## overview

The Doubt room is located right next to reception and is ideal for smaller meetings. A conference table can accommodate 8 people, and the TV, which is included in the package, makes smaller presentations or screenings possible. In order to facilitate spontaneous short meetings, the room can also be hired on an hourly basis. Fresh water is always available; coffee and tea specialities can be provided upon request.

## facts

size	room capacity [max. capacity]	equipment	minimum number of attendees
_ 32 m <sup>2</sup>	_ boardroom style [8 people]	_ set-up boardroom style _ incl. water and technic	_ 4 people

room rental  
(equals minimum spend)

hourly rate 600 dkk

# archive

coming soon

## overview

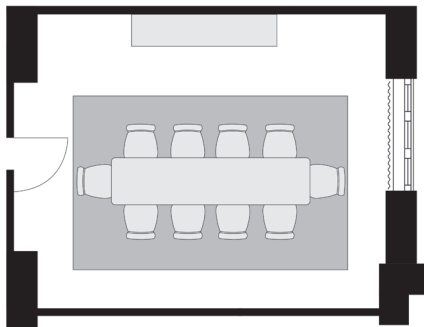
Located on the first floor, the school's old archive has a beautiful view over the Assembly Hall. The room is ideal for smaller meetings or as a breakout room. The boardroom setup accommodates up to 8 people, and the TV, which is included in the package, makes smaller presentations or screenings possible. The room is available on an hourly basis. Fresh water is always available, coffee, tea and other specialties can be provided upon request.

## facts

size	room capacity [max. capacity]	equipment	minimum number of attendees
_ 32 m <sup>2</sup>	_ boardroom style [8 people]	_ set-up boardroom style _ incl. water and technic	_ 4 people

room rental  
(equals minimum spend)

hourly rate 600 dkk



# wellbeing



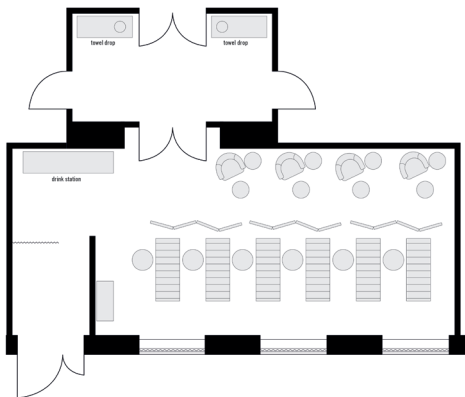
## overview

Whether your thing is yoga, mindfulness, pilates or sweating it up in the sauna, you can rent our wellbeing for your next event. The natural light and calm ambiance is also a perfect fit to host a product launch.

## facts

size	room capacity [max. capacity]	equipment	minimum number of attendees
_ 43 m <sup>2</sup>	_ 20 pax	_ incl. water and technic	_ no minimum attendees, just minimum spend

room rental  
(equals minimum spend) 20.000 dkk



# screening room

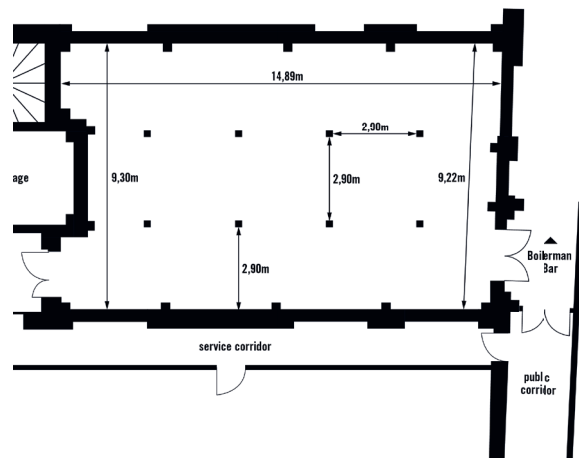


## overview

Our hotel's screening room is a versatile event space that was initially intended as a movie theatre. Today, it can be repurposed for a wide range of functions limited only by your imagination. Our sound-proof ceiling is ideal for hosting club-like concerts, while the mobile projector and seating are perfect for professional conferences. Additionally, its adjacency to the Rendezvous bar makes it an excellent add-on option for parties or gatherings.

## facts

size	room capacity [max. capacity]	equipment	minimum number of attendees
_ 135 m <sup>2</sup>	_ 100 pax for standing reception	_ screen & projector	_ no minimum attendees



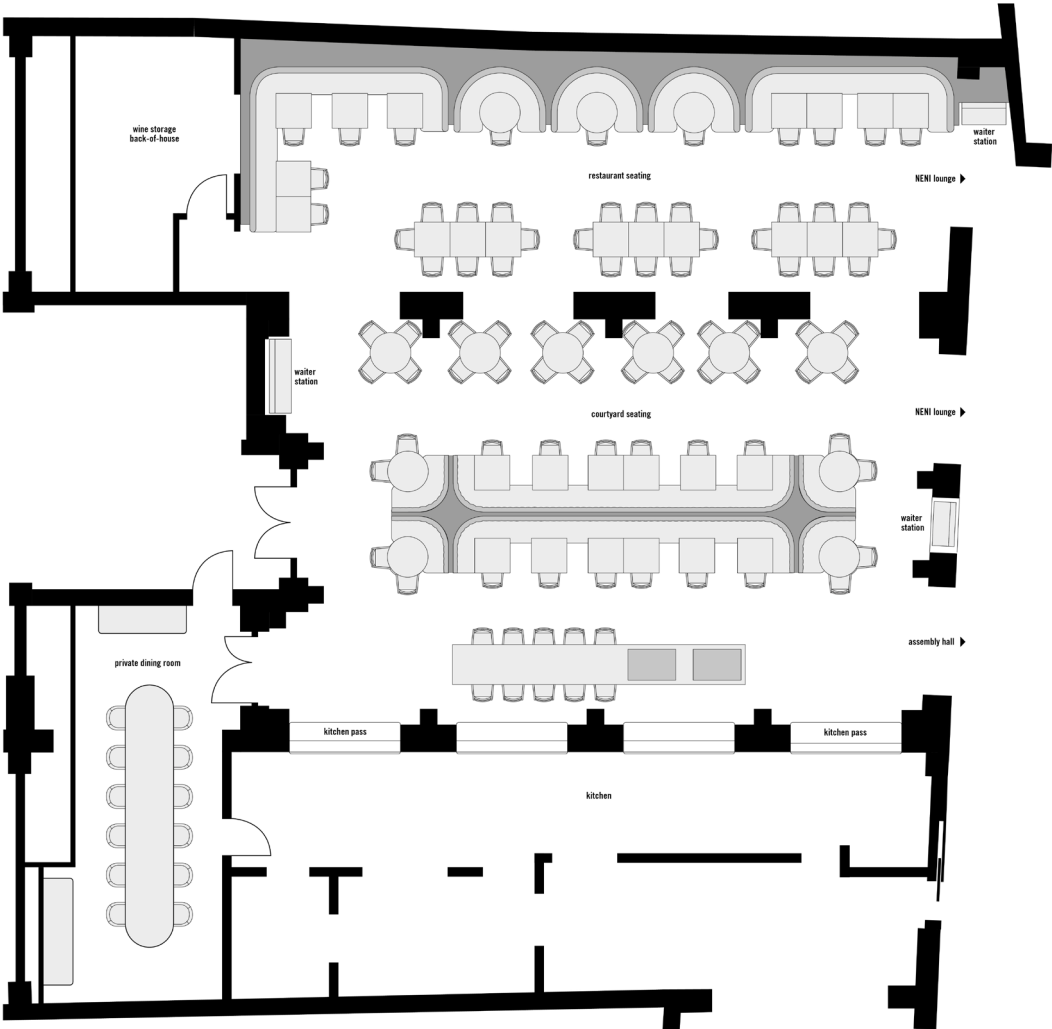
room rental  
(equals minimum spend)

20.000 dkk per day

# NENI exclusive use



# NENI exclusive use



Do you have an upcoming corporate event or a special birthday that you want to celebrate in style? NENI is the perfect place for a variety of occasions. The glass roof in the middle of the restaurant can be opened to create a fantastic outdoor feel in the summer. The open kitchen and large NENI bar can cater for every requirement.

## sunday-wednesday

- exclusive use of NENI
- up to 120 guests
- including private dining room, NENI lounge & NENI bar
- food and beverage are deducted from minimum spend
- the remaining amount will be charged as location rent
- excluding gratuity

120.000 dkk minimum spend

## thursday-saturday

- exclusive use of NENI
- up to 120 guests
- including private dining, NENI lounge & NENI bar
- food and beverage are deducted from the minimum spend
- the remaining amount will be charged as location rent
- excluding gratuity

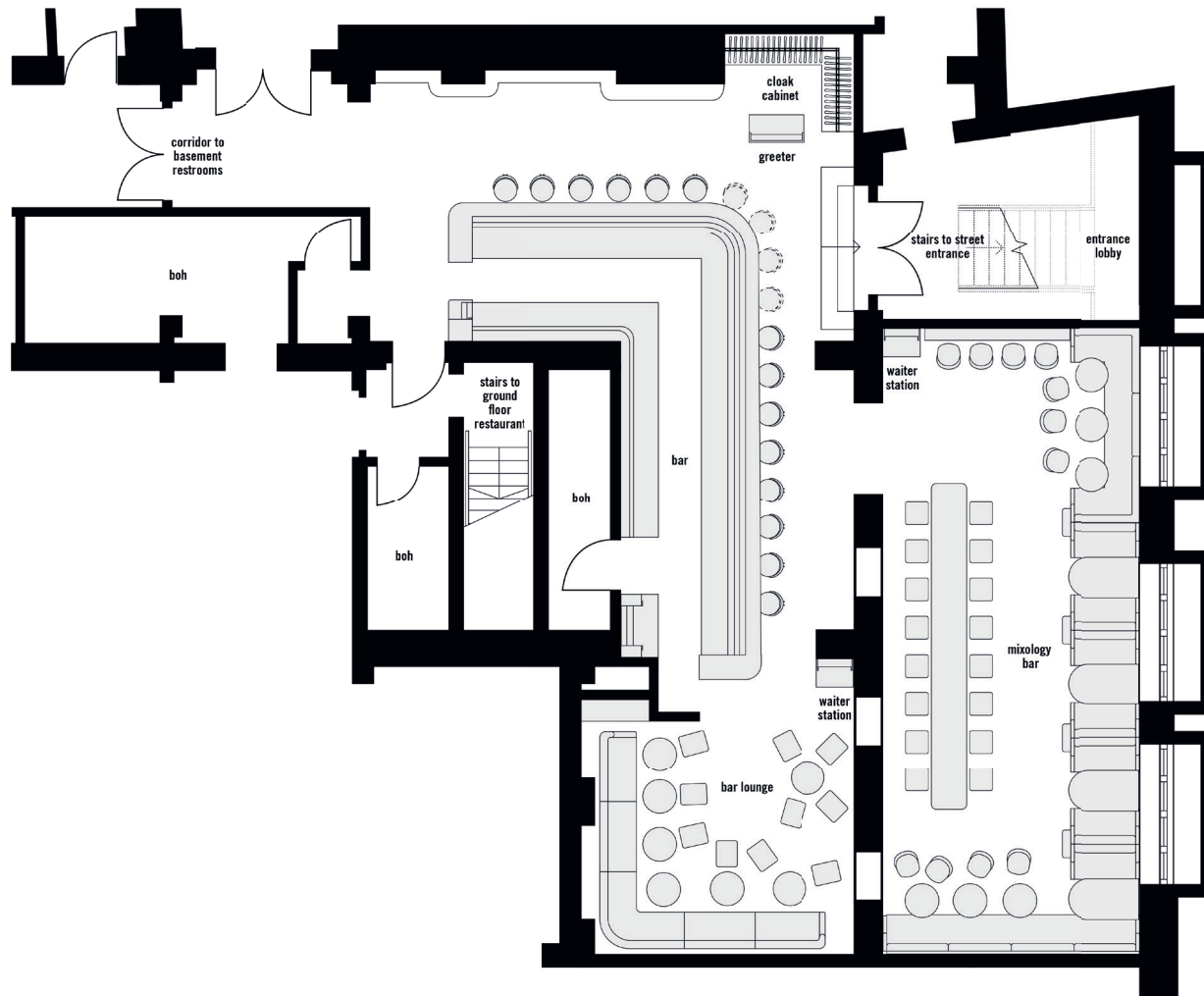
150.000 dkk minimum spend

In both cases, extra costs such as menu cards, special equipment, and furniture, etc. will NOT be deducted from the minimum spend.

# rendezvous bar exclusive use



# rendezvous bar exclusive use



Who does not love a cool, speak-easy style bar? With a separate entrance from the church square, the rendezvous bar is ideal for Friday bars, music releases or relaxed get-togethers. The mixed seating allows for space to dance, chill or stand at the bar.

## all week

- exclusive use of rendezvous bar
- up to 100 guests
- food and beverages are deducted from the minimum spend
- the remaining amount will be charged as location rent
- excluding gratuity

15.000 dkk per hour

extra costs such as menu cards, special equipment, and extra furniture, etc. will NOT be deducted from the minimum spend.



shine on,  
you crazy  
diamond.



**25h**

copenhagen / indre by  
twenty five hours hotel

# hotel rooms

## medium single

- \_ 19 - 25sqm
- \_ single bed (120cm)
- \_ air conditioning
- \_ free high-speed WiFi
- \_ bluetooth loudspeaker
- \_ FREITAG or canvasco bag
- \_ Schindelhauer Bikes for rent
- \_ free minibar

## medium

- \_ 22 - 26 sqm
- \_ kingsize-/queensize- or twin beds
- \_ air conditioning
- \_ free high-speed WiFi
- \_ bluetooth loudspeaker
- \_ FREITAG or canvasco bag
- \_ Schindelhauer bikes for rent
- \_ free minibar

## large

- \_ 27 - 30 sqm
- \_ kingsize- or twin-beds
- \_ air conditioning
- \_ free high-speed WiFi
- \_ bluetooth-loudspeaker
- \_ FREITAG or canvasco bag
- \_ Schindelhauer Bikes fo rent
- \_ free minibar



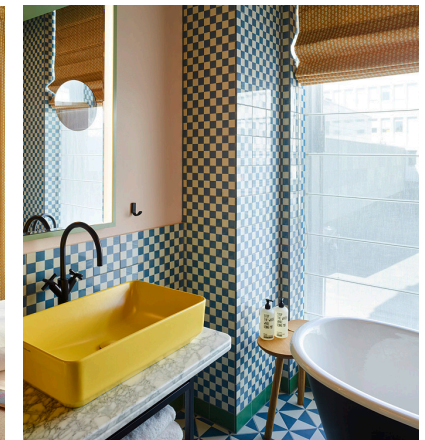
# hotel rooms

## extra large

- \_ 39 - 42 sqm
- \_ kingsize bed
- \_ air conditioning
- \_ free high-speed WiFi
- \_ desk
- \_ Bluetooth loudspeaker
- \_ FREITAG or canvasco bag
- \_ free use of our Schindelhauer Bikes
- \_ free minibar

## gigantic

- \_ 55-59 sqm
- \_ kingsize bed
- \_ air conditioning
- \_ free high-speed WiFi
- \_ desk
- \_ bluetooth loudspeaker
- \_ FREITAG or canvasco bag
- \_ bath tub
- \_ enough space for up to 3 guests
- \_ free use of our Schindelhauer Bikes
- \_ free minibar



# event ideas

## pop-up

The patterns have been returned to the drawers, the sewing machine is now gathering dust. And the most important thing: The first collection is ready to wear. Before you take it to Milan, Paris, or London, how about your own pop-up at one of our 25hours Hotels? Even the biggest designers started small and unconventionally and presented their pieces to the public. Or is there a new product launch in the pipeline? Thanks to our locations in the major cities in Germany, Austria, and Switzerland, the potential customer base is already present and won't miss your pop-up.



## press conference

Your press appearance really needs to make waves? To do this, not only the product has to be right, but also the venue. At our 25hours Hotels in Germany, Austria, and Switzerland, we offer personalised solutions for the perfect setting. Classic conference rooms with seating, cosy lounges with a fireplace or a panoramic view over the city - whatever suits your product or target groups best, we'll work together to host the perfect press conference.



## product launch

From lip balm, to the new novel series, right up to sports cars packed with horse power - good ideas need effective launches in order to have a successful start on the market. The 25hours locations are as diverse as the products unique. Be it big and grandiose or cosy and small - do you already have a brilliant idea and your breakthrough is within reach? Maybe you still need a little inspiration.



## assessment centre

Let's get down to business. Which of the applicants is potentially the right candidate for a management role? Individual or group assessments, management audits, or an evaluation assessment centre - when discretion has the top priority, we're the right choice. Even just for a cosy get-together at one of our restaurants or bars - there is a personalised solution for all kinds of requests. And the possibilities are endless at the 25hours Hotels.



# event ideas

## album release

The new album: Check! The big day is here. Now, the big wide world should listen and recognise the true artistry. We have exactly the right locations for this - be it cosy and intimate or big and fabulous. For twenty, a hundred, or even hundreds of listeners. With a live set or a sound system with bass tubes and the perfect sound. We even have instruments available on site at some hotels. Just do your thing and win the audience over with your new album. We have everything you need and the perfect spaces for a flawless release party.



## casting

Your company is in its infancy and your new offices aren't ready yet? We would be happy to provide our rooms for castings and recruitment interviews. Whether it's on a small scale or somewhat larger. Be it individual hotel rooms, the lobbies, bars, or restaurants - we have the right venue for any casting event. Just click through to have a look or come and visit us in person. Many rooms can be adjusted as required to meet your exact needs.



## fotoshooting

The new lookbook for the coming season needs to be shot? The next edition of the magazine has a feature on Berlin? Zurich or Hamburg? The photographer is booked, but the matter of the right location hasn't been resolved? Our 25hours Hotels, with their individual hotel concepts, offer tailored spaces for photoshoots with a passion for detail. Whether it's in a bathtub with a view over the Vienna MuseumsQuartier, on the roof terrace at the 25hours Hotel Bikini Berlin with a view of chimpanzees and elephants, or in the colourful, urban world of the 25hours Hotel Frankfurt The Goldman in Frankfurt's east end. Our hotels are as diverse as the fashion and culture themselves.



# directions



## arriving on public transport

From Copenhagen Kastrup Airport - In the terminal, follow the signs to metro line M2 towards Vanløse St. and get off at Nørreport station. From here it is only a 5 minute walk. Follow Fredriksberggade east until you reach the Round Tower. Turn left just after the tower and the hotel is on your right. Coming from Central Station - At the station, follow the signs to the S-train and take any train stopping at Nørreport. Get off at Nørreport station. From here it is only a 5 minute walk. Follow Fredriksberggade eastwards until you reach the Round Tower. Turn left just after the tower and the hotel is on the right.

## arriving by car

Coming from the airport or from Malmö:  
Take Amager Strandvej. Turn left onto Uplandsgade. Take Vermlandsgade towards the city centre. Cross the water at Börsgarde via Havnegade. Turn right onto Homenskanal and then immediately left towards Kongens Nytorv. After Kongens Nytorv square, turn left onto Kongens Nytorv street (becomes Gothersgade). Keep left and follow the one-way street until Pilestræde.

Coming from the south:  
Follow the E20 towards Copenhagen. Take exit 20-Copenhagen C. Follow the road Sjællandsbroen / 02. After Kongens Nytorv Square, turn left onto Kongens Nytorv Street (becomes Gothersgade). Keep left and follow the one-way street until Pilestræde. The hotel is located at Pilestræde 65 and does not have hotel parking. Parking on the street in front of the hotel is not possible due to its central location in the city centre. Parkeringshus / Gammel Mønt 1 and Q-Park Nørreport are only a few minutes from the hotel. Please note opening hours.

# contact

25hours Hotel Indre By  
Pilestræde 65  
DK-1112 Copenhagen K.

p +45 887 724 05  
[events.indreby@25hours-hotels.com](mailto:events.indreby@25hours-hotels.com)